

PRP-058K

Mini Thermal Receipt Printer

User Manual



Please keep this manual in a safe place for future reference.

Index

A. IMPORTANT SAFETY NOTIFICATION	1
B. PRODUCT OVERVIEW.....	3
Main Features.....	3
Packing.....	4
Specification	5
Part Description	7
I/O Ports	11
C. INSTALLING YOUR PRINTER	12
Connecting Your Printer.....	12
Install/Replace the Paper Roll.....	13
Installing the Driver of the Printer.....	15
D. APPENDIX.....	25
1. Self Test	25
2. DIP Switch Configuration	26
3. Paper Jam Elimination	28
4. Code Page Setup.....	30

A. Important Safety Notification

- Read the instruction manual carefully before use. Save the manual in the near location for further reference.
- Use only parts or accessories, especially power adapter, recommended by the manufacturer; unapproved parts may be hazardous and cause injuries to the product or human.

WARNING:

IF ANY FUNCTIONAL PROBLEMS OR DEFECTS OCCUR WHICH ARE ATTRIBUTABLE TO IMPROPER USE OF THE PRODUCT SHALL VOID THE WARRANTY.

- Refer servicing to qualified personnel only.
- Do not attempt to repair or disassemble the product on your own. Opening or removing cover can expose you to dangerous voltage or other hazards.
- Before plugging the power cord into the AC inlet of the power supply unit, make sure that the voltage applied to the power outlet is within the specified range (100VAC ~240VAC). Improper power source voltage range will cause damage to the power supply unit.
- Power off the product and remove the power adapter while cleaning the system.
- Before powering on the product, make sure all the connectors, cables are firmly installed.

Important Safety Notification

- Do not expose the product to rain or moisture, such as a bathtub, a washbowl, a kitchen sink, a laundry tub, and a swimming pool.
- Do not expose the machine under direct sunlight, and keep it away from any heat source.
- Do not place the product on an unstable location, stand or table. If the machine falls, it may injure a person or cause serious damage to the appliance.
- Do not allow anything to rest on the power cord. Do not locate the product where people may walk on the cord.
- Do not make the power outlet and extension cords overload. Overload can result in fire or electric shock.
- If any of the following situations occurs, unplug the product from the power outlet immediately and consult with a qualified service person:
 1. The power cord or plug is damaged or frayed.
 2. Liquid is spilled into the system.
 3. The product is dropped and damaged.
- Use a soft cloth to clean the product when it is dirty. In case the dirt is hard to remove, use a mild detergent and wipe the product gently.
Turn OFF and unplug the product before cleaning.
- When the product is not in use, clean and stores it with care.

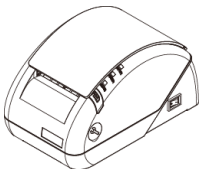
B. Product Overview



Main Features

- Compact and Stylish Design
- Cost-effective for various printing applications
- Halt-on protect function for over heat (60°C)
- Interface: serial, USB,
- Cash drawer connection port (RJ-11)
- Compatible with ESC/POS print commands set
- Full system drivers support
- User friendly, drop-and-print paper installation
- Simple paper jam elimination
- Multiple Language fonts selectable
- Barcode printing support
- QR code printing support (optional)

Packing



Printer Unit



Power Adaptor



***Power Cord**



****Printer Cable**



**Quick
Installation
Guide**



Paper Roll

* Power Cord is selectable depending on the types of electrical plug.

** Printer cable is selectable depending on the interface required.

Please refer to the nearest local representatives for further information.

Specification

Model		PRP-058K
General		
Print Method		Thermal line printing
Print Speed		90 mm/sec
Print Life		150Km
Print Font	(ASCII Mode)	ANK Character: Font A: 12 x 24dots Font B: 9 x 17dots
	(Graphic Font)	Simplified/Traditional Chinese: 24 x 24dots
Print Resolution		384 dots/line
Print Font Character Support		International Font, Big 5 Chinese, GB Chinese, Korean selectable
Character per Line		32 (Font A) / 42 (Font B) / 16 (Graphic)
Barcode Support		UPC-A/UPC-E/JAN13(EAN13)/JAN8(EAN8)/CODABAR/CODE39/CODE93/CODE128
QR Code		Optional
Paper Width		57.5mm± 0.5mm
Paper Roll Diameter		65mm
Paper Thickness		0.06~0.08mm
Driver		Win XP/Win Vista/ Win 7/Win 8, compatible with EPSON and SAMSUNG
Print Command		Compatible with ESC/POS print commands sets
Paper End Detection		Yes
Over-Heat Halt-on Protection		Yes (60°C)

Interface	
Serial	D-Sub 9-pin female connector, 9600 bps ~ 115200 bps
USB	1 x USB
Cash Drawer	+12VDC/1A, 6-Wire RJ-11 Socket

Others	
Power Input	+12VDC /3A (with External Adapter 110VAC/220VAC, 50/60Hz)
Color	Black
Compliance	FCC / CE / WEEE / RoHS
Weight	778.6 g (without cable)
Dimension (mm)	112 x 105 x 185
Operating Temperature	+5°C~ +45°C
Operating Humidity	10% ~ 80% RH non-condensing
Storage Temperature	-10°C~ +50°C
Storage Humidity	10% ~ 90% RH non-condensing

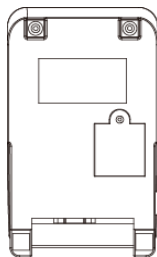
* All specifications are subject to change without prior notice.

Part Description

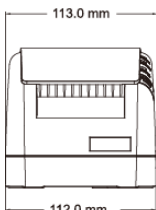
Product Views



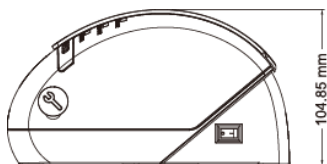
Top View



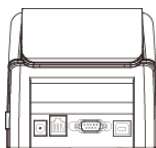
Bottom View



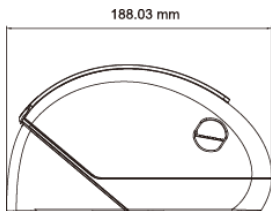
Front View



Right View



Rear View (Serial/USB)



Left View

Control Buttons & Indicators

- **Control Buttons**

Paper Feed:

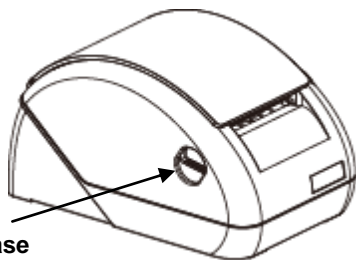
This function is to advance the paper.

Press the key and the paper advances by a single line.

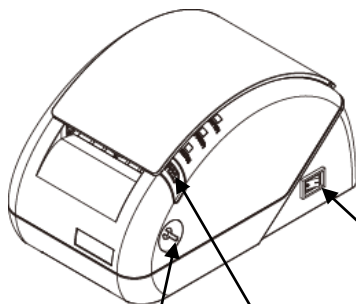
Press and hold the key for over 3 seconds and the paper advances by multiple lines.

Cover Release Button:

Push the button to the right to open the printer cover.



**Cover Release
Button**

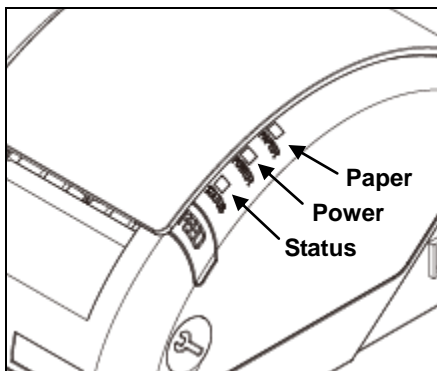


**Power
Switch**

**Paper Feed
Button**

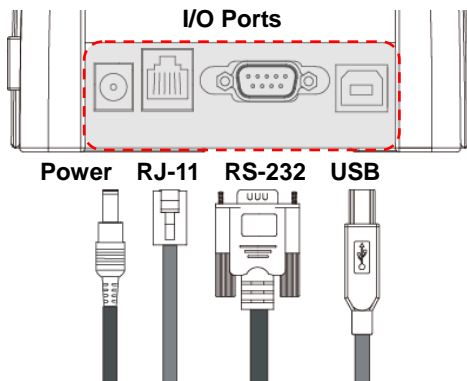
Maintenance Cover

- **Indicator Status**



Indicator	Status	Description
Paper	●	Out of paper * The Error Indicator is lit as well
Power	●	Power Off
	●	Power On
Status	●	Printer Error (Out of paper, Printer head over heat, or paper cutter error)

I/O Ports

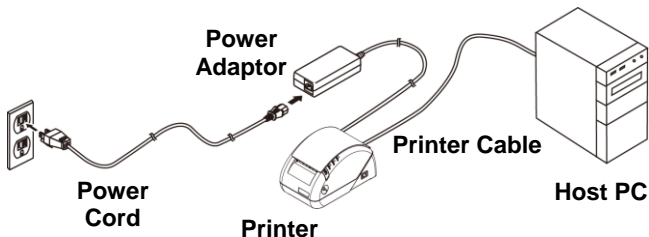


Rear View

C. Installing your Printer

Connecting Your Printer

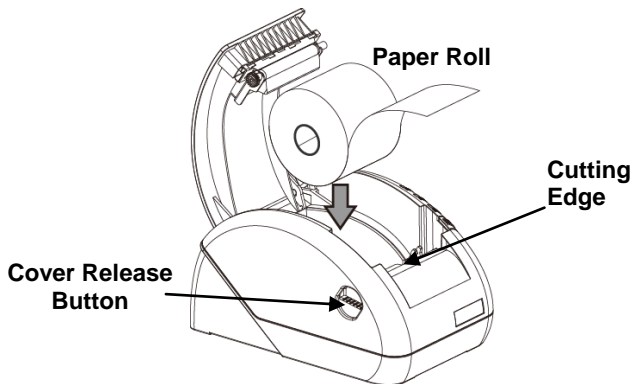
Please check the printer and the supplied accessories before Installation. It's recommended to read the entire instruction manual prior to the installation.



1. Place the printer on the designate location.
2. Detach the I/O Port Bracket.
Plug the connector of Power Adaptor to the printer.
3. Use the supplied Printer Cable and connect to the Host PC.
4. Plug the Power Cord to the Power Adaptor and then plug to the power outlet.
5. If there is a Cash Drawer to be connected, connect the RJ-11 cable to the printer.

Install/Replace the Paper Roll

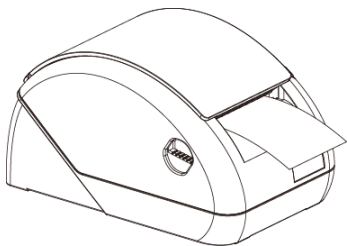
1. Press the Cover Release Button to open the Cover.
2. Roll out and install the Paper Roll with Holder into the Printer. (with the edges of the paper roll holder onto the holder slots)



Warning:

Beware of the Cutting Edge of the cutter module during maintenance in order to avoid injury to the person near the printer.

3. Replace the Cover and tear off the odd paper using the cutting edge.



Installing the Driver of the Printer

Before installing the driver of your printer, make sure the printer is properly connected to the host PC.

To install the driver of the printer:

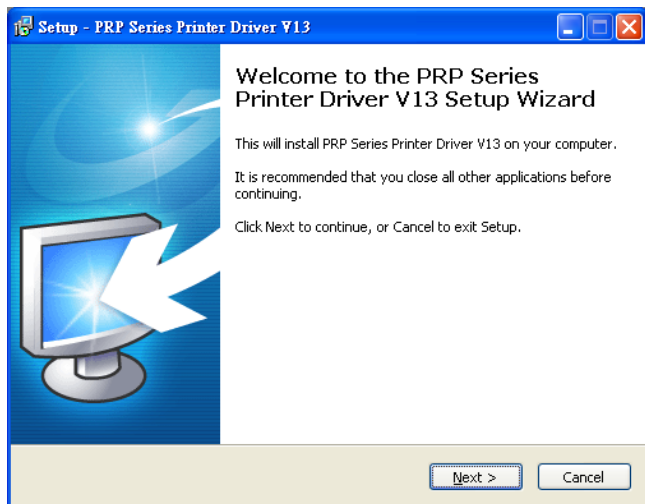
Before installing the driver of your printer, make sure the printer is properly connected to the host PC.

To install the driver of the printer:

1. Access the website www.fametech.com.tw and download the driver.
2. Double click the icon “PRPDRVEN” to initiate the installation.

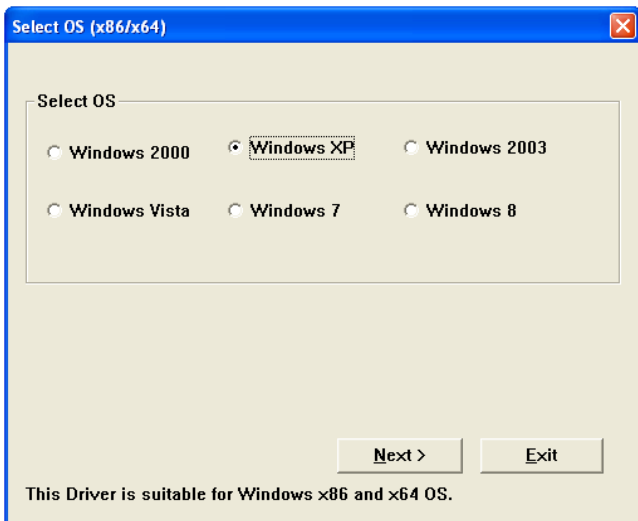


3. Click "Next" to continue.



4. Select the Operating System.

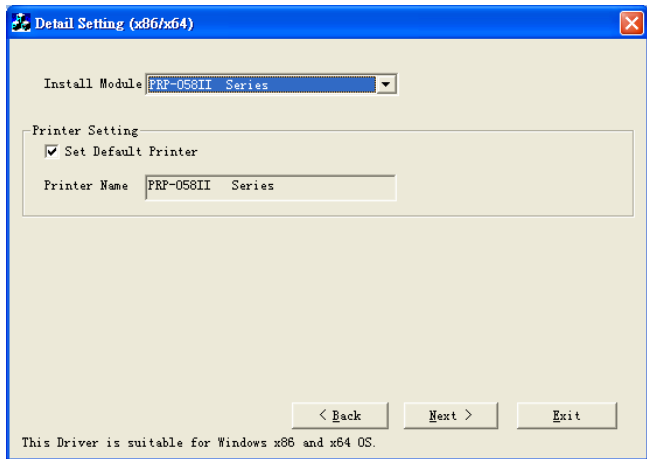
(For example: select “Windows XP” for Windows XP version). Click “Next” to continue.



● Printer Configuration

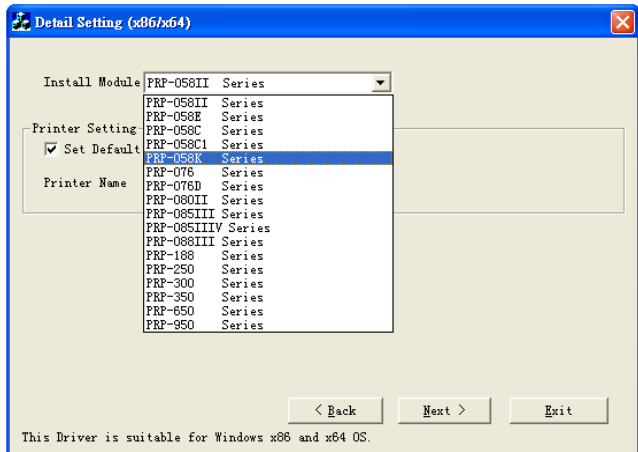
This menu allows user to configure the printer according to the model number.

Please refer to the steps below to complete the configuration.



1. Select Module Number:

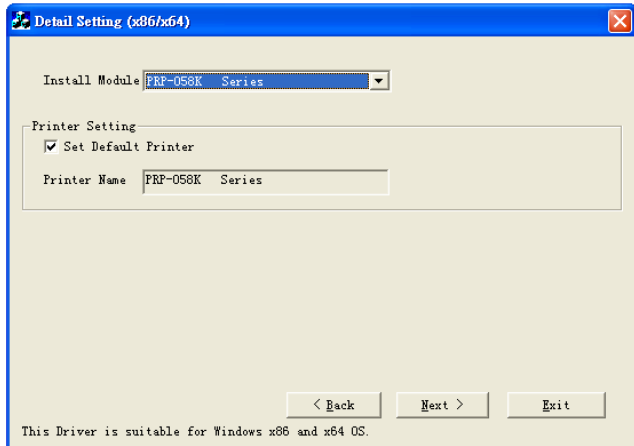
Select Printer Model Number



2. Default Printer Setting:

To set the printer as the default printer, click the checkbox to confirm.

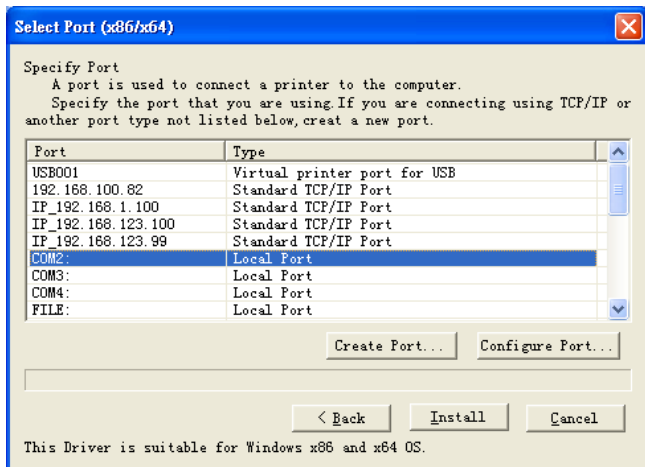
Click “Next” to continue.



3. Printer Interface Setting:

Select the communication interface
(COM port or USB)

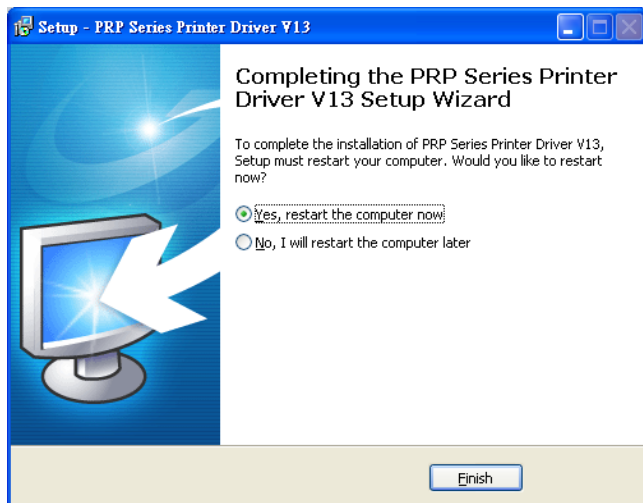
Click "Install" to complete the installation.



4. **Configuration Completed.**

Click “Finish” to exit the menu.

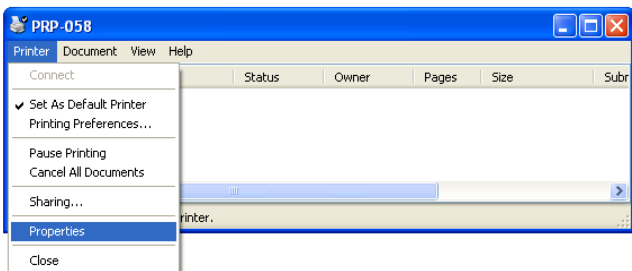
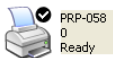
It' recommended restarting the computer after installation is completed.



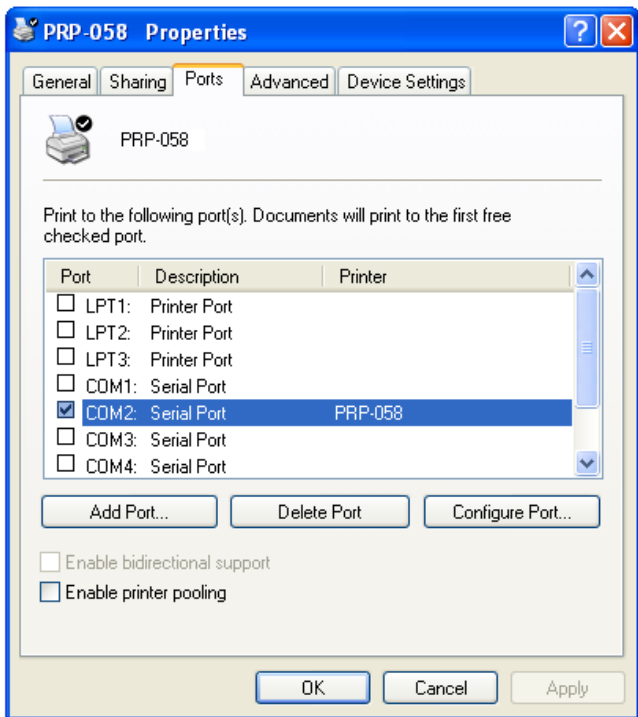
5. Port Setting:

Remember to access the properties of your printer (Start>>Printers and Faxes>>) and double-click the icon to enter.

Make sure the port of printer is correctly configured.



Access sub menu “Ports”, and click to select the correct port for your printer.
Click “OK” to exit.



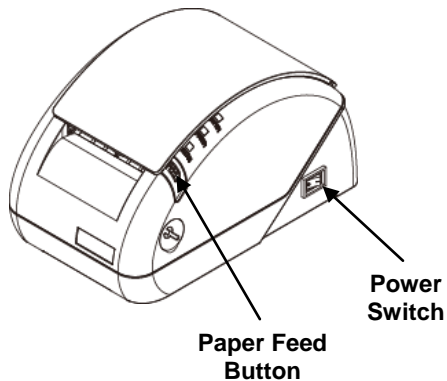
D. Appendix

1. Self Test

This function allows user to perform self-test and print out the settings of the printer unit:

1. Turn off the printer.
2. Press and hold the Paper Feed Button.
3. Turn on the Power Switch of the printer.
4. The Indicators would blink and then Release the Paper Feed Button.

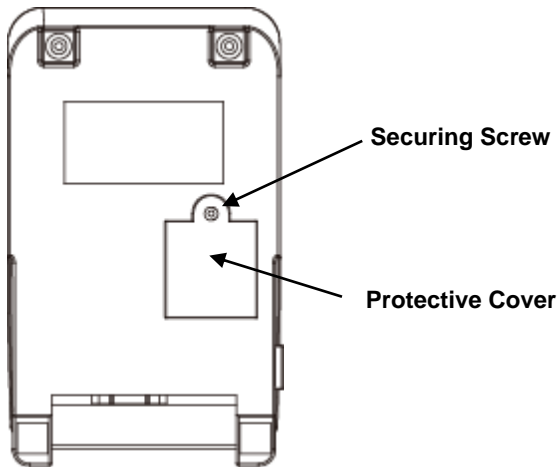
Now the printer starts printing out the self-test data.



2. DIP Switch Configuration

To change the setting of the printer manually:

1. Turn off the printer.
2. Loosen the securing screw of the Protective Cover.
3. Remove the Protective Cover.
4. Adjust the switches to configure the printer.



DIP Switch Setting

Function DIP Switch

DIP	Function	ON	OFF
SW-1	Paper Cutter	No	Yes
SW-2	Audio Alarm (Beeper)	Yes	No
SW-3	Print Density	Dark	Light
SW-4	Two-byte Character Code	No	Yes
SW-5	Black Mark	Yes	No
SW-6	Reserved	---	---

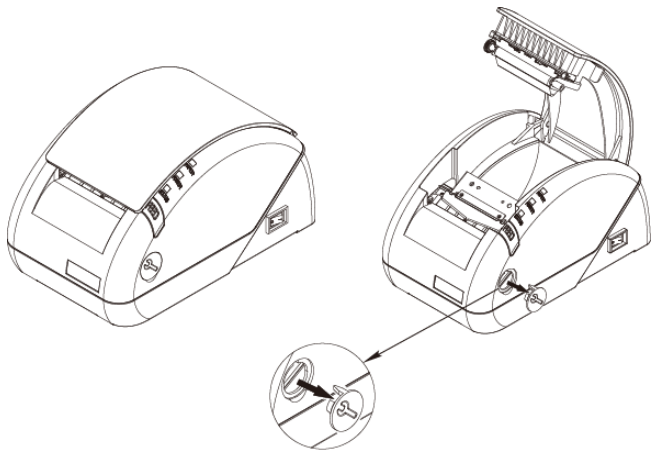
Baud Rate Setting (DIP-7, DIP-8)

SW-7	SW-8	Baud Rate
ON	ON	38400
OFF	ON	115200
ON	OFF	9600
OFF	OFF	19200

3. Paper Jam Elimination

When printer cutter jammed and the top cover cannot be opened, you can eliminate the jammed paper by re-initiating the printer:

1. Turn off the power switch.
2. Restart the printer.
3. The cutter will return to normal status and you can open the top cover to remove the jammed paper from the cutter.



Maintenance Cover

If the printer fail to return to the normal status and top cover cannot be opened:

1. Pull out the Maintenance Cover.
2. Use a cross screw driver to adjust the cutter position.
3. Keep adjust the cutter position until the cutter move forward with the jammed paper.
4. Remove the jammed paper with care.
5. Use the screw driver to adjust the cutter back to the normal position.
6. Re-install the Maintenance Cover.

4. Code Page Setup

1. Access the website www.fametech.com.tw and download the utility files.
2. Click the folder “SetCodePage” to access the software



SetCodePage

3. Double click the icon “Setup” to initial installation.
ions to install the utility.



Setup
Windows Installer Package



Setup
Windows Installer Package

● Code Page Setup Utility

This utility can help user to setup the code page of the printer.

Note: Before Setup

It may need to re-configure the printer prior to the codepage setup (e.g.: DIP switch).

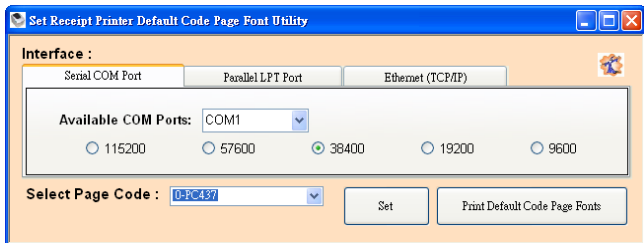
It's recommended to consult the technical personnel relating to the information about the code page and application.

■ Interface

User can establish communication with printer via this menu. Select the proper submenu by the connection type of the printer.

For Serial COM Port:

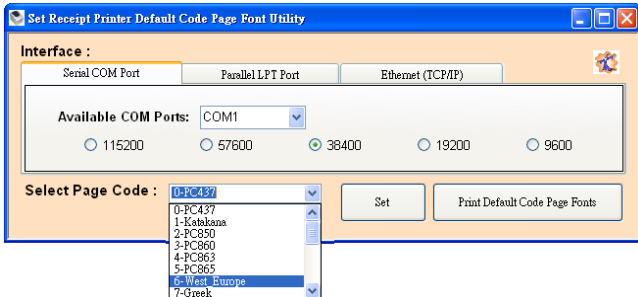
Select the proper COM port and baud rate to establish communication.



■ Select Code Page

To select the code page desired:

1. Make sure to the DIP switch 4 of the printer is set **ON** (please refer to DIP Switch Configuration for further information).
2. Go to the scroll menu and select the preset code page desired.
User can enter the code page number into the field manually. (Please refer to the printed Self-Test page for the code number support).
3. Click “Set” button to confirm the setting.



4. Re-initiate the Printer:

Be sure to **Turn-Off and Turn-On** the printer again to initiate the printer with new code page setting.
(User can perform the self-test again to exam the new code page setting)

